

An Artist's Garden

Colourants made from Nature's Palette

Nabil Ali

23 outubro 2018 | 15h15

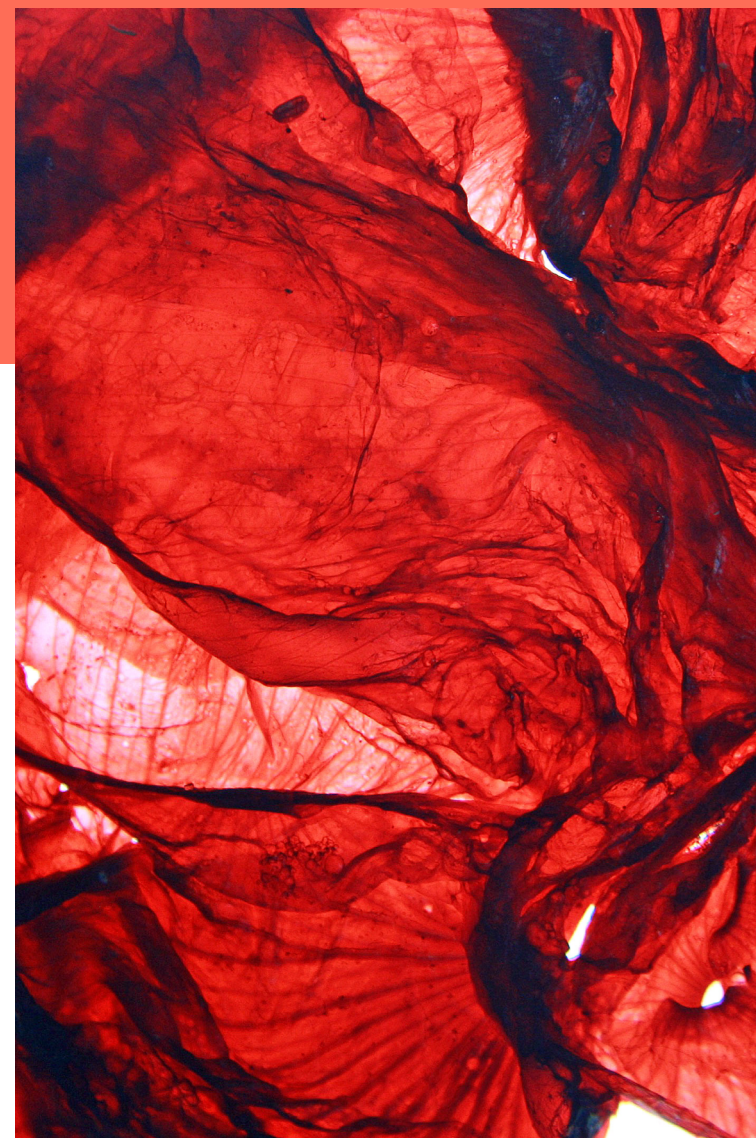
Sala de reuniões do DCR

Faculdade de Ciências e Tecnologia
Universidade Nova de Lisboa

www.dcr.fct.unl.pt • tel 212 948 322

Nabil Ali is a professional Artist from the Southeast of England and grows and processes his own paint from a selection of plants in his workshop garden. He uses medieval technical manuals and historical paint sources as a foundation to reconstruct paint and ink recipes to form conceptual art installations and paintings. Ali's current show: 'An Artist's Garden', is a sample collection of images representing a handful of painters' and illuminators'

recipes which depict an artist's journey reflecting elements of the world. These images are but small glimpses through a keyhole of the artist's garden, moments of expressing stories of solitude and natural engagement through the ever-changing seasons of Northern Europe. His work over the years is experimental, yet shows ways to re-examine past practices in a contemporary way to re-evaluate what we think we know about our own perspectives



Poppy